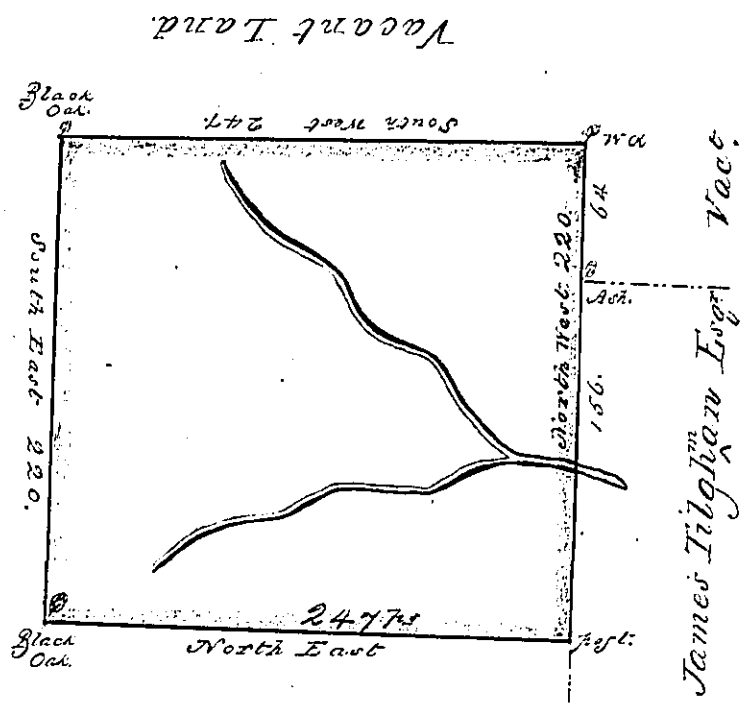


C-58182

Vacant



B. 7-116

Vacant Land
C 183-184

By virtue of an Application dated the 14 day of June 1769, No. 3490 - Surveyed the 12th September 1769, unto Jonathan Lodge the above described Tract of Land situate on a branch of Chillisquaque Creek in the County of Berks, containing three hundred & twenty acres & sixty four perches, with allowance of six p. Ct.
 Jp Wm Scull.

IN TESTIMONY that the above is a copy of the original remaining on file in the Department of Internal Affairs of Pennsylvania, made conformably to an Act of Assembly approved the 16th day of February, 1833, I have hereunto set my Hand and caused the Seal of said Department to be affixed at Harrisburg, this
 nineteenth day of July 1876

Wm W. Condes
 Secretary of Internal Affairs